

Length overall (LOA)	ANNUAL SEA BERTH	SEMI-ANNUAL SEA BERTH
-12 m	8.100 €	5.500 €
-13 m	8.600 €	5.800 €
-14 m	9.700 €	6.300 €
-15 m	10.800 €	7.000 €
-16 m	13.100 €	8.200 €
-17 m	14.100 €	9.000 €
-18 m	14.800 €	9.300 €
-19 m	16.100 €	10.000 €
-20 m	17.600 €	11.000 €
-21 m	19.500 €	12.200 €
-22 m	21.500 €	13.100 €
-23 m	23.500 €	14.100 €
-24 m	24.500 €	15.100 €
-25 m	26.000 €	16.900 €
-26 m	28.000 €	18.900 €

Annual or semi-annual sea berth fee is payable only in advance according to the contract for the use of berth.

Price of annual or semi-annual sea berth includes 10 days of dry berth and one parking space in the marina parking for the vehicle of the vessel owner indicated in the contract for the use of berth.

Winter boat storage is offered depending on availability on marina dry dock. Monthly fee is calculated as 3 % of annual sea berth price.

Length overall (LOA)	ANNUAL DRY BERTH	SEMI-ANNUAL DRY BERTH
-10 m	6.560 €	3.610 €
-11 m	6.630 €	3.690 €
-12 m	6.710 €	3.990 €
-13 m	7.550 €	4.230 €
-14 m	8.200 €	4.650 €
-15 m	9.050 €	4.970 €
-16 m	9.860 €	5.420 €
-17 m	10.700 €	5.820 €
-18 m	11.550 €	6.320 €
-19 m	12.380 €	6.730 €
-20 m	13.390 €	7.310 €
-21 m	14.210 €	8.220 €

Annual or semi-annual dry berth fee is payable only in advance according to the contract for the use of berth.

Price of annual or semi-annual dry berth includes cradles and one parking space in the marina parking for the vehicle of the vessel owner indicated in the contract for the use of berth.

Length overall (LOA)	DAILY SEA BERTH		DAILY DRY BERTH	
	01.10. - 31.05.	01.06. - 30.09.	01.10. - 30.04.	01.05. - 30.09.
-8 m	50 €	70 €	50 €	40 €
-9 m	55 €	75 €	55 €	43 €
-10 m	60 €	80 €	57 €	45 €
-11 m	65 €	85 €	60 €	48 €
-12 m	70 €	90 €	65 €	53 €
-13 m	75 €	105 €	70 €	55 €
-14 m	80 €	115 €	80 €	65 €
-15 m	90 €	125 €	85 €	70 €
-16 m	95 €	140 €	95 €	75 €
-17 m	105 €	150 €	105 €	80 €
-18 m	115 €	160 €	110 €	90 €
-19 m	120 €	170 €	125 €	100 €
-20 m	135 €	195 €	135 €	110 €
-21 m	155 €	220 €	155 €	125 €
-22 m	175 €	250 €	-	-
-23 m	195 €	275 €	-	-
-24 m	220 €	310 €	-	-
>24 m	10 €/m	14 €/m	-	-

CONSECUTIVE STAY ON SEA BERTH

3 to 30 days	10 % discount
more than 30 days	30 % discount

FLOTILLA OR GROUP SAILING (PRIOR RESERVATION REQUIRED)

5 to 10 vessels	10 % discount
11 vessels or more	20 % discount

USE OF SEA BERTH FOR LESS THAN 4 HOURS

	50 % discount
--	---------------

CONSECUTIVE STAY ON DRY BERTH

20 days and more	20 % discount
30 days and more (PRIOR RESERVATION REQUIRED)	40 % discount

TRAVEL LIFT (40 t)

Length overall (LOA)	2 TRAVEL LIFT OPERATIONS ¹	1 TRAVEL LIFT OPERATION ²	HIGH PRESSURE HULL WASH
-6 m	187 €	100 €	28 €
-7 m	214 €	125 €	39 €
-8 m	280 €	172 €	44 €
-9 m	352 €	211 €	50 €
-10 m	412 €	252 €	60 €
-11 m	517 €	305 €	72 €
-12 m	632 €	398 €	82 €
-13 m	748 €	438 €	94 €
-14 m	869 €	477 €	105 €
-15 m	957 €	529 €	121 €
-16 m	1.166 €	649 €	132 €
-17 m	1.265 €	703 €	143 €
-18 m	1.364 €	755 €	154 €
-19 m	1.617 €	861 €	165 €
-20 m	1.694 €	967 €	176 €
-21 m	1.892 €	1.100 €	209 €

¹The price applies if both operations are completed within one month. 3 days on dry berth are included in the price for stays shorter than 20 days.

20 % DISCOUNT FOR 2 TRAVEL LIFT OPERATIONS (for transit boats only, length up to 10 m LOA, for arrivals on trailer, without servicing of the boat on dry berth)

²Moving of vessel within dry berth or moving it from vehicle into cradle or conversely is charged as 1 travel lift operation.

CRADLE HIRE

MY / SY

LOA	Daily	Monthly
< 12 m	7 €	100 €
> 12 m	9 €	120 €

OTHER MARINA SERVICES

LAUNDRY WASHING / LAUNDRY DRYING	10 €
HAZARDOUS WASTE DISPOSAL	30 €
FORKLIFT HIRE	per hour 50 €
WATER TANK REFILL	200 litres 10 €
SEWAGE DISCHARGE	80 litres 10 €
TENDER BOAT DRY BERTH <4 m	daily 10 € / monthly 150 €
BOAT STORAGE TENT dimensions 6m x 12m (4m height)	Price: 50% of daily dry berth price
THIRD PARTY CONTRACTOR daily	person 70 € company 150 €
DAMAGED MOORING PENALTY	100 €
DISCHARGING OF ENVIRONMENTALLY HARMFUL SUBSTANCES INTO THE SEA	2.000 €
PENALTY FOR NON COMPLIANCE OF HAZARDOUS WASTE DISPOSAL	2.000 €
PARKING CAR	daily 15 € / weekly 60 € / monthly 150 €
PARKING TRAILER	daily 17 € / weekly 70 € / monthly 190 €
PARKING CAMPER	daily 20 € / weekly 120 €
PARKING (OTHER VEHICLE CATEGORY)	price per request

GENERAL NOTES

- Check-out for the vessels is 2 pm at the latest.
- Prices are based on the vessel's length overall (LOA). Marina reserves the right to charge a different price based on the length (LOA) obtained by the performed measurement.
- Price of all berths includes use of electricity (16A or 32A), water consumption, use of sanitary facilities and showers, WI-FI.
- Marina is under 24 hour surveillance sign.
- Berth prices for catamarans and trimarans are increased by 100 %.
- Annual berth for charter vessel is increased by 10 %. The price is calculated starting from 13 m (LOA).
- DISCOUNTS CANNOT BE COMBINED.

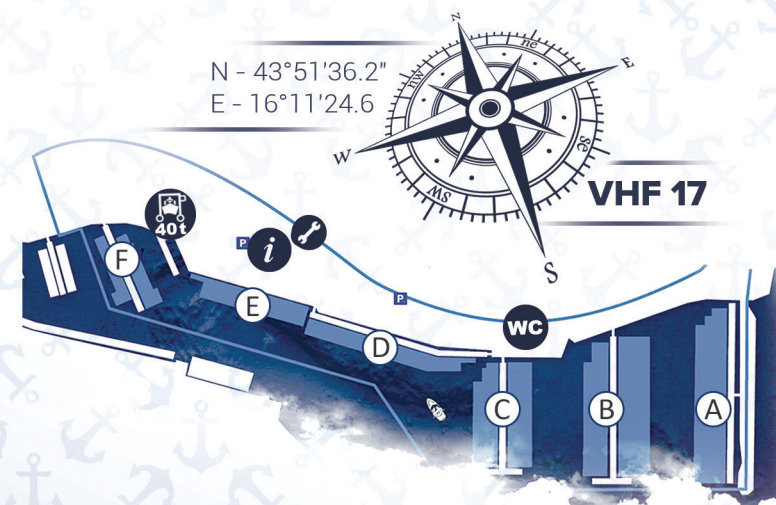
Marina Agana reserves the right to change and update the Pricelist without prior notification and takes no responsibility for any typographical errors. All Marina Agana service users are to comply with terms and conditions from the effective Pricelist, General terms and conditions and Contract for the use of berth, as well as the Ordinance on maintaining order in Marina Agana.



MARINA AGANA

PRICELIST 2026

PRICELIST IN € (VAT INCLUDED)
VALID FROM 01.01.2026. UNTIL 31.12.2026.



JAHTING SPORT AGANA d.o.o.

+385 21 889 411
info@marina-agana.hr

Dr. Franje Tudmana 5, 21222 Marina; fax.: +385 21 889 010
www.marina-agana.hr; OIB: 35407400534
IBAN: HR9324840081104699762, SWIFT: RZBHHR2X